

Installation Instructions

Red Mountain Pass

Part # VFC003-B



ID SCULPTURE

PLAY. CLIMB. EXPLORE.

591 South Boulevard Street

Gunnison, Colorado 81230

info@idsculpture.com

970-641-1747

Specifications: Red Mountain Pass

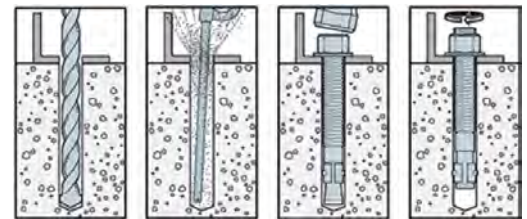
- Material: GFRC Concrete with Structural Foam
- Approximate Uninstalled Size (Boulder 1): 5'-7" x 4'-3" x 7'-0"
- Approximate Uninstalled Size (Boulder 2): 6'-7" x 5'-8" x 8'-0"
- Approximate Uninstalled Size (Boulder 3): 4'-11" x 4'-7" x 7'-10"
- Approximate Weight (Boulder 1): 2,900 Lbs
- Approximate Weight (Boulder 2): 4,800 Lbs
- Approximate Weight (Boulder 3): 3,100 Lbs
- Maximum Fall Height (Boulder 1): 5'-7" (assumes 12" of protective surfacing)
- Maximum Fall Height (Boulder 2): 6'-7" (assumes 12" of protective surfacing)
- Maximum Fall Height (Boulder 3): 5'-5" (assumes 12" of protective surfacing)
- Age Group: 5-12 Years Old

Required Parts (included):

- "Boulder 1" Sculpture
- "Boulder 2" Sculpture
- "Boulder 3" Sculpture
- VF- Ramp Net and Hardware
- VF- Matrix Ropes and Hardware
- VF- Twisted Ramp Net and Hardware
- VF- Trifecta Ropes and Hardware
- 4" x 4" x 3/8" Aluminum Angle Mounting Brackets: 12ct
- 3/4 x 8 1/2" SS Wedge Anchor: 12ct
- 1/2 x 8 1/2" SS Wedge Anchor: 6ct
- Bolt Hanger (Lifting Eye) : 12ct
- Igloo Rope Connection Pin : 18ct
- Security Hex Key
- "Red Mountain Pass" Drawing Set

Important Notes:

- *Warning: Installation over a hard surface such as asphalt, or packed earth may result in serious injury or death from falls.*
- *It is the responsibility of the installer to ensure all components are installed in compliance with ASTM F-1487.*
- *All site built footings should be allowed to cure for a minimum of 48 hours prior to installation.*



Typical Wedge Anchor Installation

Recommended Equipment (not included):

- Hammer Drill
- 3/4" x 10" Concrete Drill Bit
- 1/2" x 10" Concrete Drill Bit
- Air Compressor with Blow Tube
- Hole Brush
- 1-1/8" Wrench
- 3/4" Wrench
- 12' Lifting Straps: 4ct
- Ratchet Strap (to be used as a choke): 1ct
- 1/2" Quick Links: 4ct
- Large Adjustable Crescent Wrench
- Wrench set/ socket set
- Lift: Reach Type Forklift 8,000lb Capacity, Skid Steer or Crane

Installation Instructions

Red Mountain Pass

Part # VFC003-B



591 South Boulevard Street
Gunnison, Colorado 81230
info@idsculpture.com
970-641-1747

PRE-INSTALL CHECKLIST

Please review prior to ordering and installing ID Sculpture products.

- ☐ 1. Verify that you have the recommended lifting equipment to unload and install your component, as specified by the installation instructions. Please check the installation instructions for the weight of each component and shipping dimensions.
- ☐ 2. Develop a proper plan to access the site and control access prior to opening.
- ☐ 3. Call your local utilities to locate any potential existing below grade equipment?
- ☐ 4. FOR ALL SCULPTURES: Verify you have accounted for adjustments to the footing depth based on your choice of safety surfacing material. Footing depth must be adjusted to compensate for the depth/thickness requirements of the selected safety surfacing (*see diagrams below*). Layout drawings show the uninstalled dimensions of the component. If you require a modification to a standard component, please notify ID Sculpture when placing your order. *Additional charges may apply.*



*Critical Fall Height (CFH)

- ☐ 5. Verify that you have installed any required footings prior to the arrival of your sculptures. Please note, footings should be allowed to cure for a minimum of 7 days.

Important Safety Note:

Please install and maintain adequate protective surfacing under and around your equipment. Never let children play on the equipment before protective surfacing is installed. Please consult ASTM F1487 for more information.

Installation Instructions

Red Mountain Pass

Part # VFC003-B



591 South Boulevard Street
Gunnison, Colorado 81230
info@idsculpture.com
970-641-1747

Sculpture Installation (Boulders 1,2, 3):

1. Locate and construct each footer based on the provided "Footing Locate" drawing A.01.3 in the layout.
2. Make sure that the Bolt Hanger / lifting eyes are securely attached to the bolts protruding from the base of each sculpture. Secure the Lifting Straps to Bolt Hangers using 1/2" Quick Links.
3. Lift the sculptures using an appropriate reach forklift or crane taking care to equalize the load on straps.
4. Set the sculptures in place on their footings as shown in the footing layout, verify all use zones as defined by ASTM 1487 before drilling anchor holes.
5. DO NOT remove the bolt hangers until sculpture ropes are installed and tensioned.

Note: When locating boulder on footing, make sure to maintain 10' spacing between the centers of each igloo for any boulder to boulder rope connections

Sculpture Ropes Installation (VF Matrix & Trifecta Ropes):

6. Connect sculpture rope to GRFC sculpture with provided Igloo rope connectors & connection pin (6).
7. Adjust rope tension by carefully sliding one or both sculptures with crane or reach fork.
8. When proper tension is achieved verify all use zones as defined by ASTM 1487.

***** Never install any rope component taut, some slack should always be present.*****

Installation Instructions

Red Mountain Pass

Part # VFC003-B



591 South Boulevard Street
Gunnison, Colorado 81230
info@idsculpture.com
970-641-1747

Sculpture Ropes Installation (VF Ramp Net & Twisted Ramp Net):

9. Connect sculpture rope to GRFC sculpture with provided Igloo rope connectors & connection pin (3).
10. Locate and mark the chain connection points on the piers by simultaneously pulling all 3 chain lengths away from the sculpture. Remove excess chain links as necessary. Verify all use zones as defined by ASTM 1487.

*** Never install any rope component taut, some slack should always be present. ***

11. Drill and clean holes with a 1/2" bit in the marked locations on the concrete piers to a minimum depth of 7-1/2".
12. Secure the supplied 1/2" x 8-1/2" SS wedge anchors leaving 1-1/2" of thread exposed above pier.
13. Connect chain to the wedge anchor following the detail on page 5. Trim anchor stud flush with top of nut.

Sculpture Installation Continued:

14. Only after all sculpture ropes have been connected and adjusted and use zones as defined by ASTM 1487 have been verified, should the sculpture(s) be anchored to the ground.
15. Remove all bolt hangers, replace the 5/8" nut over mounting brackets.
16. Drill through the holes in the mounting brackets on each boulder with a 3/4" x 10" hammer drill bit to a minimum depth of 7 1/2", clean holes with compressed air and brush.
17. Install the 3/4" x 8-1/2" stainless steel wedge anchors and tighten. (12)
18. Install resilient surfacing material in accordance with layout guidelines, and ASTM standards.

Installation Instructions

Red Mountain Pass

Part # VFC003-B



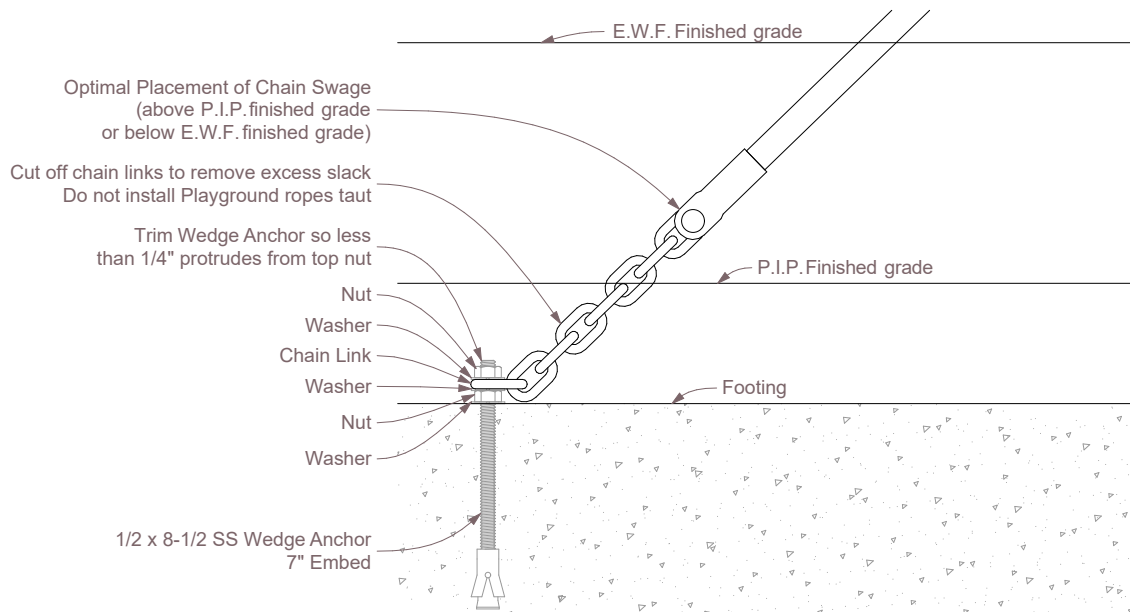
ID SCULPTURE

PLAY. CLIMB. EXPLORE.

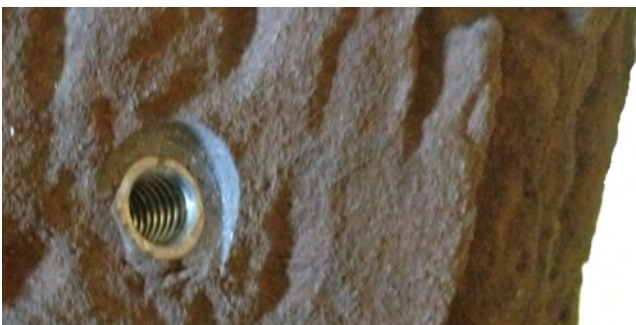
591 South Boulevard Street
Gunnison, Colorado 81230
info@idsculpture.com
970-641-1747



Typical Single Rope Tension



Rope to Footing Connection Detail



Female Threaded Connection



Installed Igloo Connector

Installation Instructions

Red Mountain Pass

Part # VFC003-B



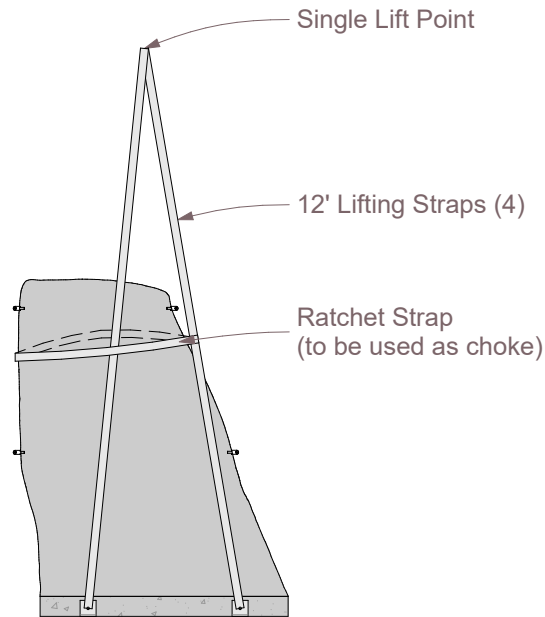
ID SCULPTURE

PLAY. CLIMB. EXPLORE.

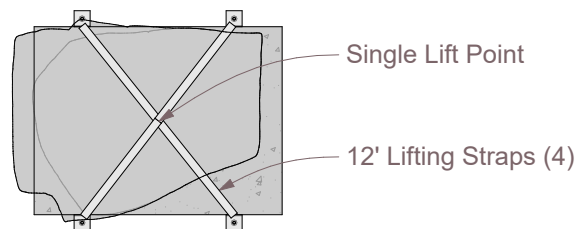
591 South Boulevard Street
Gunnison, Colorado 81230
info@idsculpture.com
970-641-1747



Example of ratchet strap choke
on typical boulder. Strap is used to
equalize load when lifting.
(Note: this is not a
Via Ferrata Boulder)



VF Boulder 1 Pick Diagram - Elevation



VF Boulder 1 Pick Diagram - Plan

Installation Instructions

Red Mountain Pass

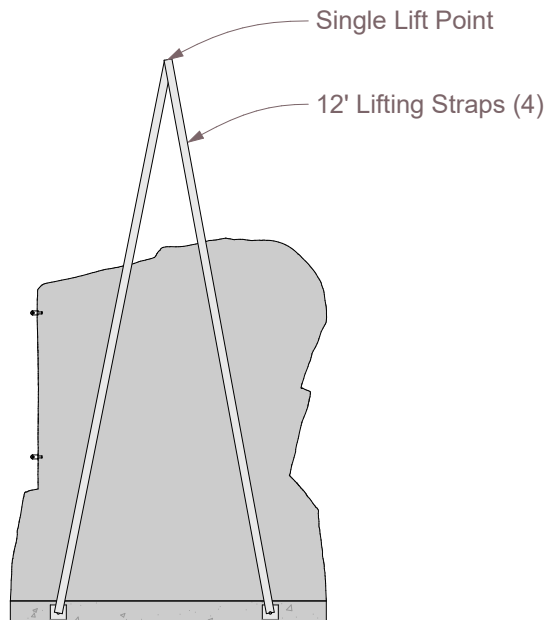
Part # VFC003-B



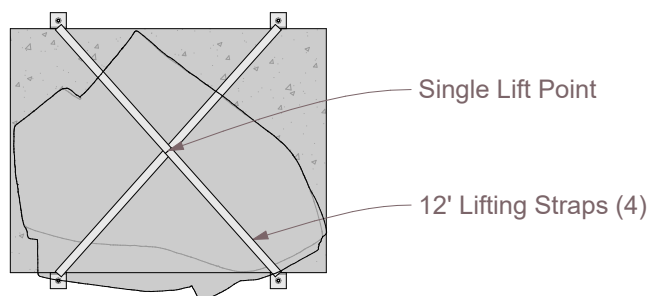
ID SCULPTURE

PLAY. CLIMB. EXPLORE.

591 South Boulevard Street
Gunnison, Colorado 81230
info@idsculpture.com
970-641-1747



VF Boulder 2 Pick Diagram - Elevation



VF Boulder 2 Pick Diagram - Plan

Installation Instructions

Red Mountain Pass

Part # VFC003-B



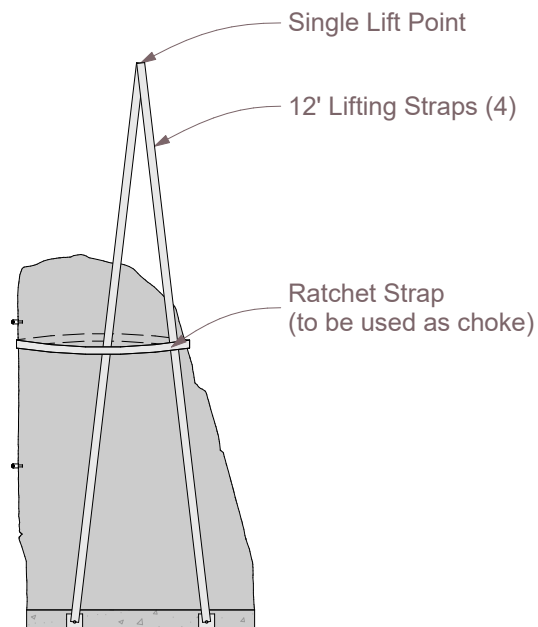
ID SCULPTURE

PLAY. CLIMB. EXPLORE.

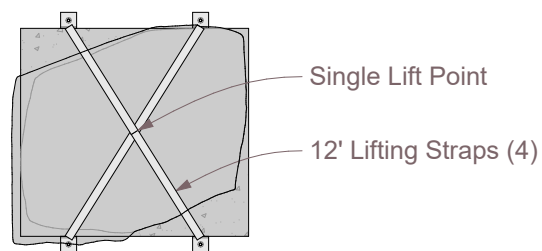
591 South Boulevard Street
Gunnison, Colorado 81230
info@idsculpture.com
970-641-1747



Example of ratchet strap choke
on typical boulder. Strap is used to
equalize load when lifting.
(Note: this is not a
Via Ferrata Boulder)



VF Boulder 3 Pick Diagram - Elevation



VF Boulder 3 Pick Diagram - Plan